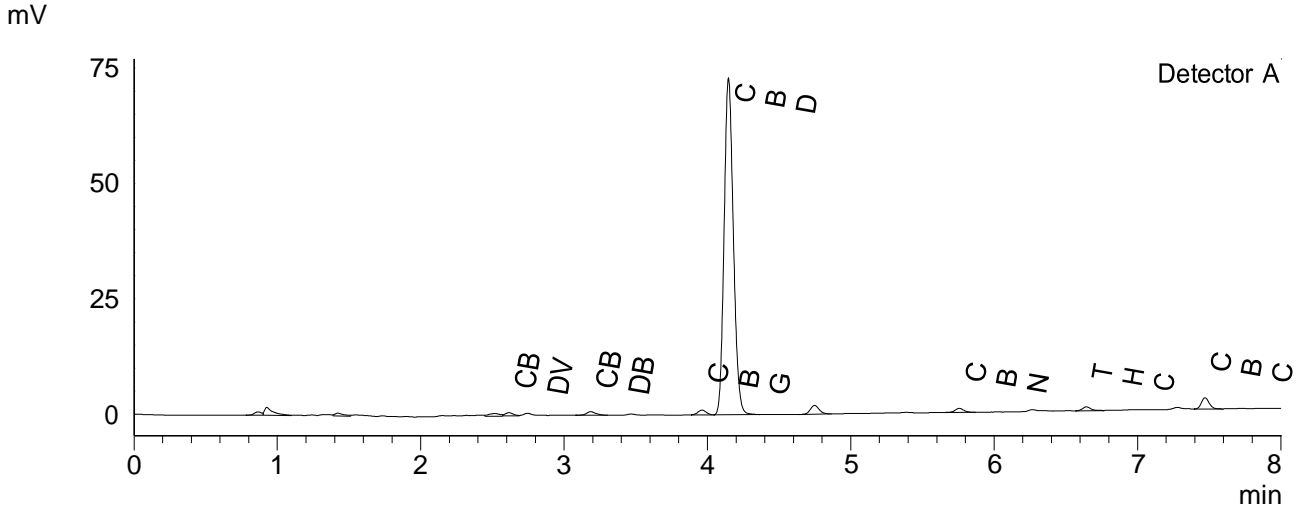


CERTIFICATE OF ANALYSIS

Chromatogram



Quantitative Results

Detector A

Compound Name	Concentration, %
CBDV	0.107
CBDA	--
CBGA	--
CBG	0.222
CBD	17.080
THCV	--
CBN	0.083
THC	0.148
CBC	0.404
THCA-A	--
CBL	--
CBDVA	--
CBDB	0.155

Sample information

Sample name: 4054
Analysis date: 2022 04 06

Summary

Total THC	0.15	%
Total THC	1.48	mg/g
Total CBD	17.08	%
Total CBD	170.80	mg/g

-- — compound bellow LOQ or not detected; LOQ < 0.001%
THC content does not exceed legal limits.

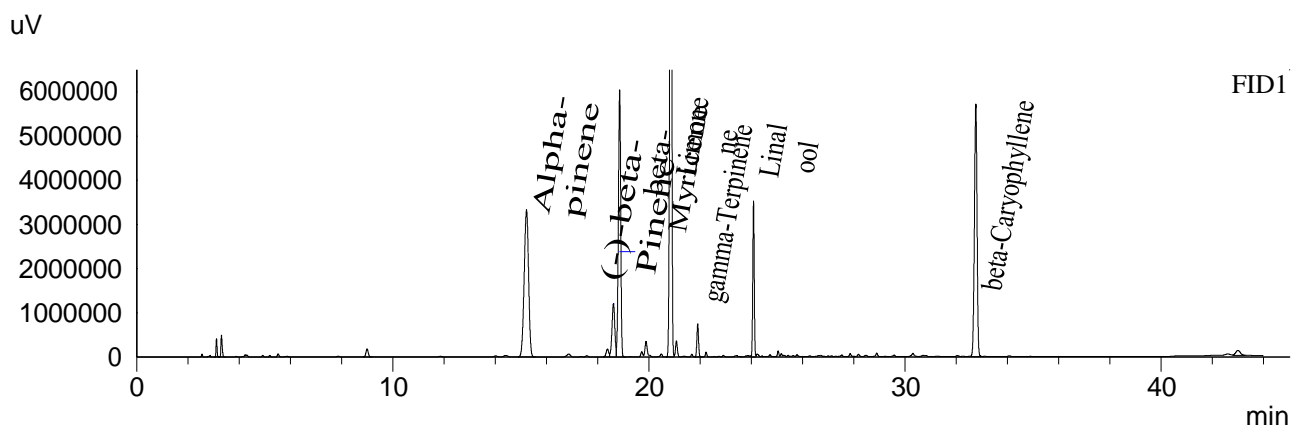
Instrumental and analytical conditions.

Sample preparation: 0.01 g (± 0.00001) of homogenous sample was diluted with 1 mL of HPLC grade methanol. Diluted sample was mixed, vortexed and centrifuged. Then the mixture was diluted again to a final concentration of 0.1 mg/mL. Peak identification and quantification was performed by comparing retention times and UV absorption spectra of the samples with those of the standard solutions.

Equipment: Quantitative analysis was performed using Shimadzu Cannabis Analyzer for Potency - an integrated HPLC system with built-in sample cooler, degasser, autoinjector and UV detector. NexLeaf CBX for potency, 2.7 μ m, 4.6 x 150 mm column coupled with NexLeaf Guard column. Data was analyzed using Shimadzu LabSolutions software.

CERTIFICATE OF ANALYSIS

Chromatogram



Quantitative Results

FID1

Sample information

Batch number: 4054

Compound Name	Concentration, %
Alpha-pinene	0.295
Camphene	--
(-)-beta-Pinene	0.056
beta-Myricene	0.287
delta-3-carene	--
alpha-Terpinene	--
Limonene	0.518
p-Cymene	--
Ocimene	--
gamma-Terpinene	0.010
Terpinolene	--
Linalool	0.099
(-)-Isopulegol	--
Geraniol	--
beta-Caryophyllene	0.299
alpha-Humulene	--
Nerolidol	--
(-)-Guaiol	--
(-)-alpha-Bisabolol	--