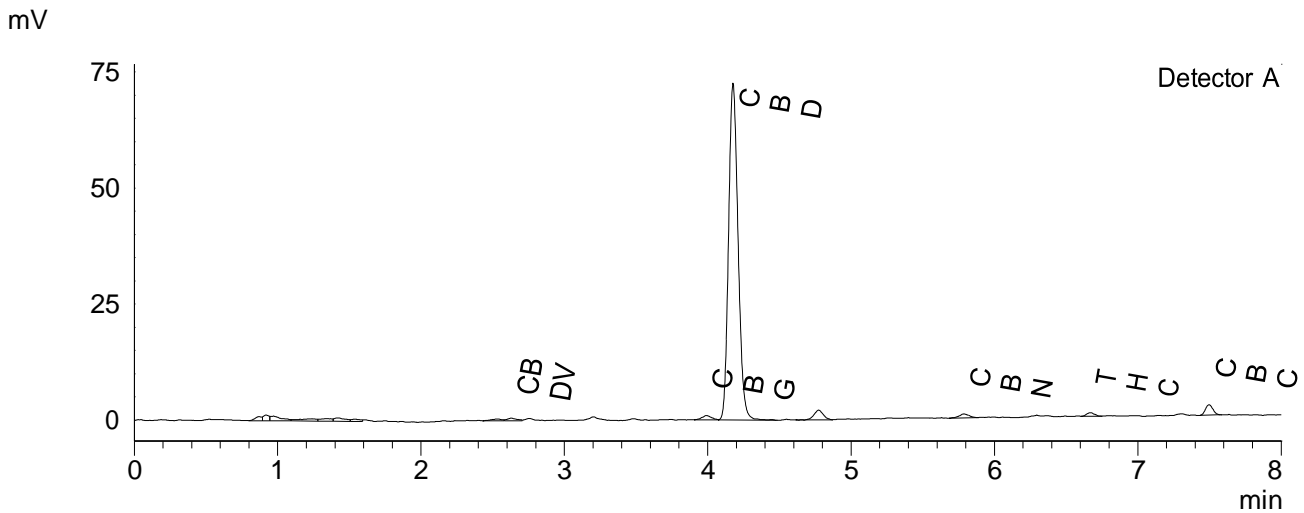


CERTIFICATE OF ANALYSIS

Chromatogram



Quantitative Results

Detector A

Compound Name	Concentration, %
CBDV	0.100
CBDA	--
CBGA	--
CBG	0.229
CBD	15.365
THCV	--
CBN	0.090
THC	0.118
CBC	0.335
THCA-A	--
CBL	--
CBDVA	--
CBDB	--

Sample information

Sample name: Hemp Drops 1500mg CBD DC
Batch number: C220414-6
Date of Analysis: 2022 04 22

Summary

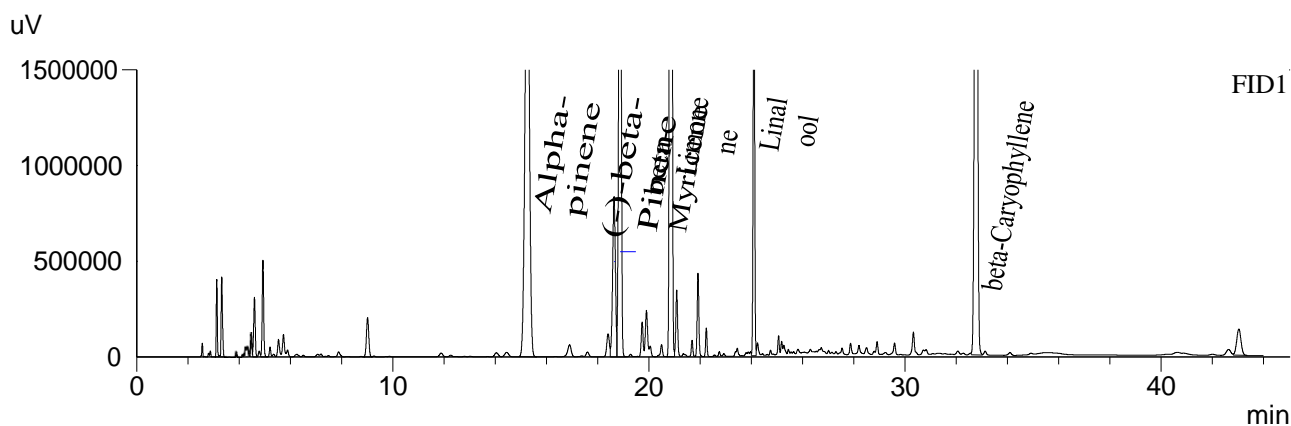
Total CBD	15.37	%
Total CBD	153.65	mg/g

Instrumental and analytical conditions:

Sample preparation: 0.1 g of sample material was dissolved in 10 mL of HPLC grade methanol. The solution was vortexed and centrifuged. Then the solution was diluted to a final concentration. Quantification of cannabinoids was performed using standard calibration curve method. Equipment: Quantitative analysis was performed using Shimadzu Cannabis Analyzer for Potency an integrated HPLC system with built-in sample cooler, degasser, autoinjector and UV detector. NexLeaf CBX for Potency, 2.7 µm, 4.6 x 150 mm column coupled with NexLeaf CBXGuard column was eluted by using a mixture of mobile phase A (0.085 % phosphoric acid in water) and mobile phase B (0.085% phosphoric acid in Acetonitrile) with a flow rate of 1.6 mL/min at 35°C. Sample injection volume was set to 5 µL. Gradient program used - 70 % B for 3 min, 70-85 % B over 4 min, 85-95 % B over 0.01 min; 95 % B for 0.99 min; 95-70 % B over 0.01 min; 70 % B for 1.99min. Data was analyzed using Shimadzu LabSolutions software.

CERTIFICATE OF ANALYSIS

Chromatogram



Quantitative Results

FID1

Sample information

Batch number:

C220414-6

Compound Name	Concentration, %
Alpha-pinene	0.323
Camphene	--
(-)-beta-Pinene	0.053
beta-Myricene	0.288
delta-3-carene	--
alpha-Terpinene	--
Limonene	0.568
p-Cymene	--
Ocimene	--
gamma-Terpinene	--
Terpinolene	--
Linalool	0.104
(-)-Isopulegol	--
Geraniol	--
beta-Caryophyllene	0.358
alpha-Humulene	--
Nerolidol	--
(-)-Guaiol	--
(-)-alpha-Bisabolol	--