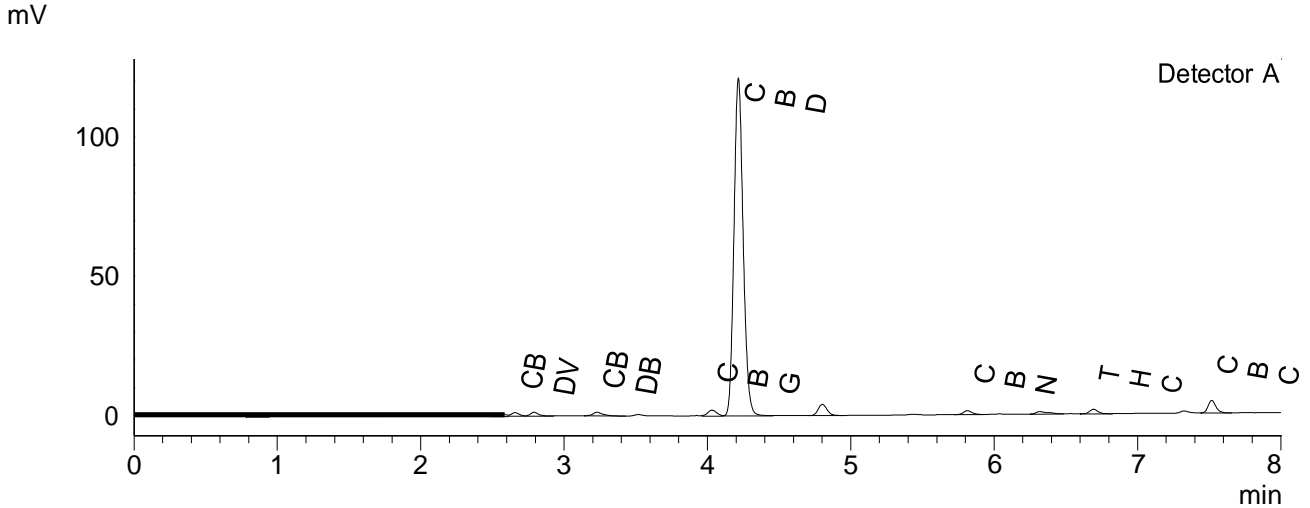


CERTIFICATE OF ANALYSIS

Chromatogram



Quantitative Results

Detector A

Compound Name	Concentration, %
CBDV	0.086
CBDA	--
CBGA	--
CBG	0.199
CBD	10.962
THCV	--
CBN	0.058
THC	0.127
CBC	0.311
THCA-A	--
CBL	--
CBDVA	--
CBDB	0.018

Sample information

Sample name: 6138
 Analysis date: 2022 05 02

Summary

Total THC	0.13	%
Total THC	1.27	mg/g
Total CBD	10.96	%
Total CBD	109.62	mg/g

-- — compound below LOQ or not detected; LOQ < 0.001%
 THC content does not exceed legal limits.

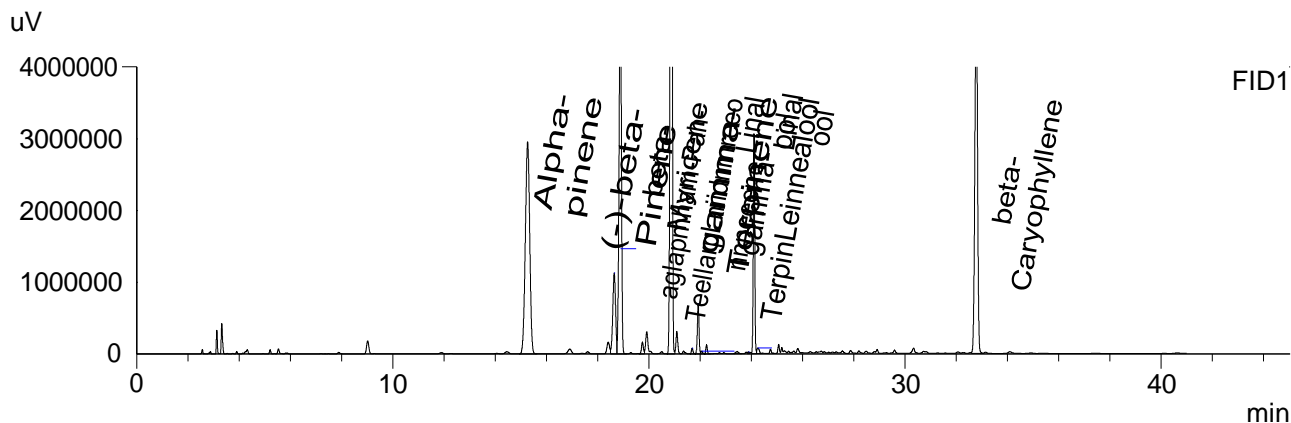
Instrumental and analytical conditions.

Sample preparation: 0.01 g (± 0.00001) of homogenous sample was diluted with 1 mL of HPLC grade methanol. Diluted sample was mixed, vortexed and centrifuged. Then the mixture was diluted again to a final concentration of 0.1 mg/mL. Peak identification and quantification was performed by comparing retention times and UV absorption spectra of the samples with those of the standard solutions.

Equipment: Quantitative analysis was performed using Shimadzu Cannabis Analyzer for Potency - an integrated HPLC system with built-in sample cooler, degasser, autoinjector and UV detector. NexLeaf CBX for potency, 2.7 μ m, 4.6 x 150 mm column coupled with NexLeaf Guard column. Data was analyzed using Shimadzu LabSolutions software.

CERTIFICATE OF ANALYSIS

Chromatogram



Quantitative Results

Sample information

FID1

Batch number:

6138

Compound Name	Concentration, %
Alpha-pinene	0.293
Camphene	--
(-)-beta-Pinene	0.057
beta-Myrcene	0.285
delta-3-carene	--
alpha-Terpinene	--
Limonene	0.523
p-Cymene	--
Ocimene	--
gamma-Terpinene	0.013
Terpinolene	--
Linalool	0.102
(-)-Isopulegol	--
Geraniol	--
beta-Caryophyllene	0.307
alpha-Humulene	--
Nerolidol	--
(-)-Guaiol	--
(-)-alpha-Bisabolol	--
Nerol	--
alpha-Phellandrene	0.011