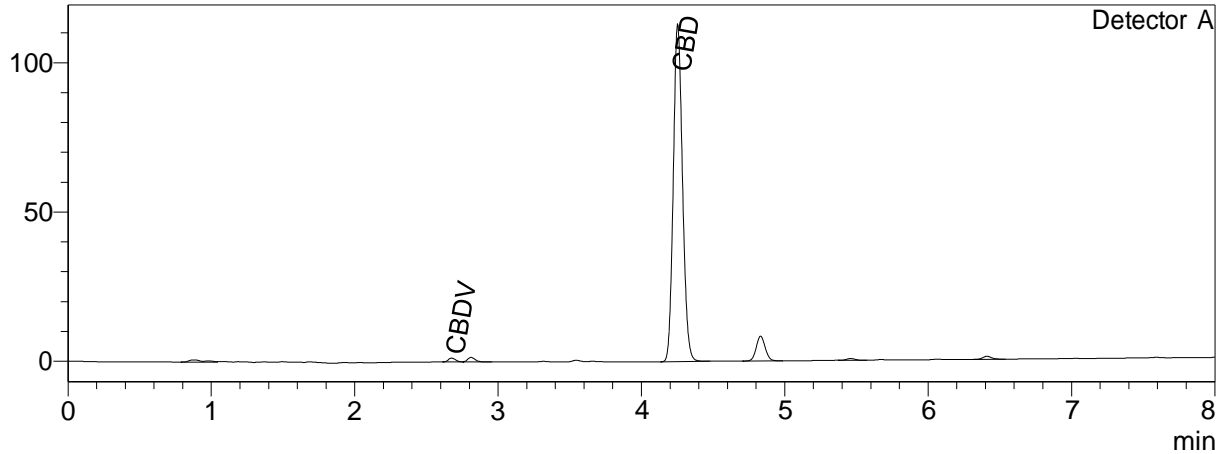


## CERTIFICATE OF ANALYSIS

### Chromatogram

mV



### Quantitative Results

Detector A

Compound Name	Concentration, %
CBDV	0.042
CBDA	--
CBGA	--
CBG	--
CBD	5.597
THCV	--
CBN	--
THC	--
CBC	--
THCA-A	--
CBL	--
CBDVA	--
CBDB	--

### Sample information

Sample name: 6301  
Analysis date: 2022 06 30

### Summary

Total THC	0.00	%
Total THC	0.00	mg/g
Total CBD	5.60	%
Total CBD	55.97	mg/g

-- — compound bellow LOQ or not detected; LOQ < 0.001%  
THC content does not exceed legal limits.

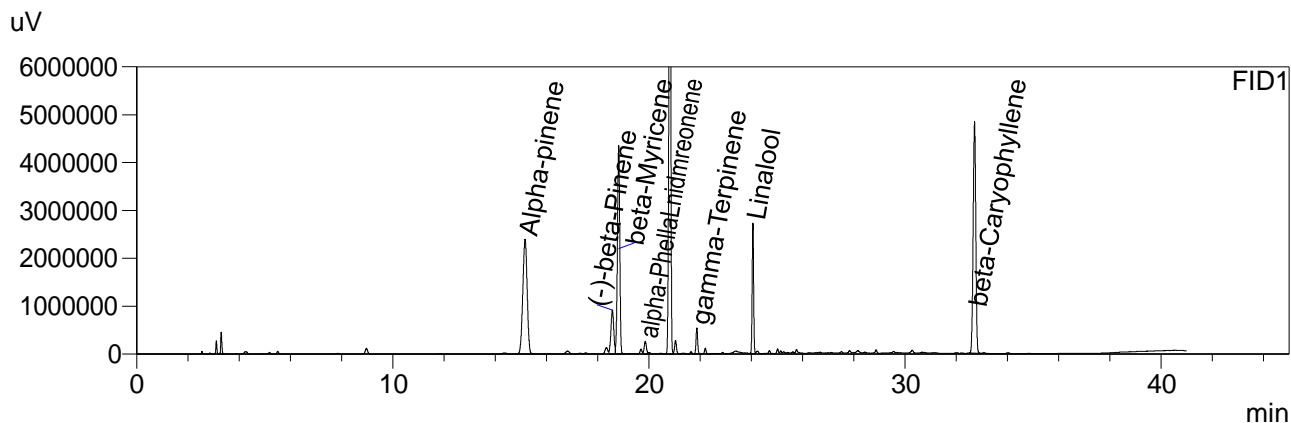
#### Instrumental and analytical conditions.

Sample preparation: 0.01 g ( $\pm 0.00001$ ) of homogenous sample was dilluted with 1 mL of HPLC grade methanol. Diluted sample was mixed, vortexed and centrifuged. Then the mixture was dilluted again to a final concentration of 0.1 mg/mL. Peak identification and quantification was performed by comparing retention times and UV absorption spectra of the samples with those of the standard solutions.

Equipment: Quantitative analysis was performed using Shimadzu Cannabis Analyzer for Potency - an integrated HPLC system with built-in sample cooler, degasser, autoinjector and UV detector. NexLeaf CBX for potency, 2.7  $\mu$ m, 4.6 x 150 mm collumn coupled with NexLeaf Guard collumn. Data was analyzed using Shimadzu LabSolutions software.

## CERTIFICATE OF ANALYSIS

### Chromatogram



### Quantitative Results

FID1

Compound Name	Concentration, %
Alpha-pinene	0.298
Camphene	--
(-)-beta-Pinene	0.056
beta-Myricene	0.294
delta-3-carene	--
alpha-Terpinene	--
Limonene	0.555
p-Cymene	--
Ocimene	--
gamma-Terpinene	0.003
Terpinolene	--
Linalool	0.106
(-)-Isopulegol	--
Geraniol	--
beta-Caryophyllene	0.360
alpha-Humulene	--
Nerolidol	--
(-)-Guaiol	--
(-)-alpha-Bisabolol	--
Nerol	--
alpha-Phellandrene	0.029

### Sample information

Batch number: 6301