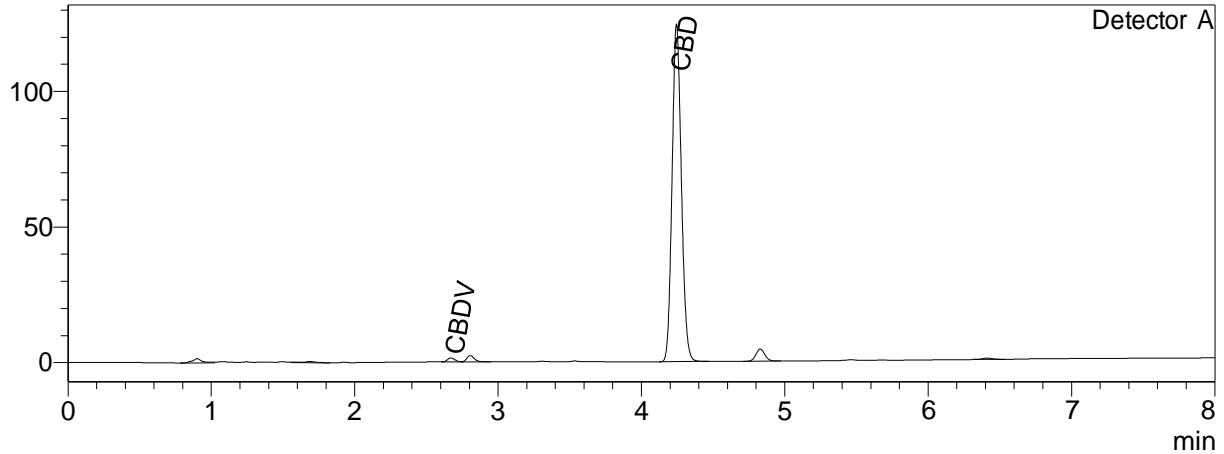


CERTIFICATE OF ANALYSIS

Chromatogram

mV



Quantitative Results

Detector A

Compound Name	Concentration, %
CBDV	0.079
CBDA	--
CBGA	--
CBG	--
CBD	10.548
THCV	--
CBN	--
THC	--
CBC	--
THCA-A	--
CBL	--
CBDVA	--
CBDB	--

Sample information

Sample name: 6302
Analysis date: 2022 06 30

Summary

Total THC	0.00	%
Total THC	0.00	mg/g
Total CBD	10.55	%
Total CBD	105.48	mg/g

-- — compound bellow LOQ or not detected; LOQ < 0.001%
THC content does not exceed legal limits.

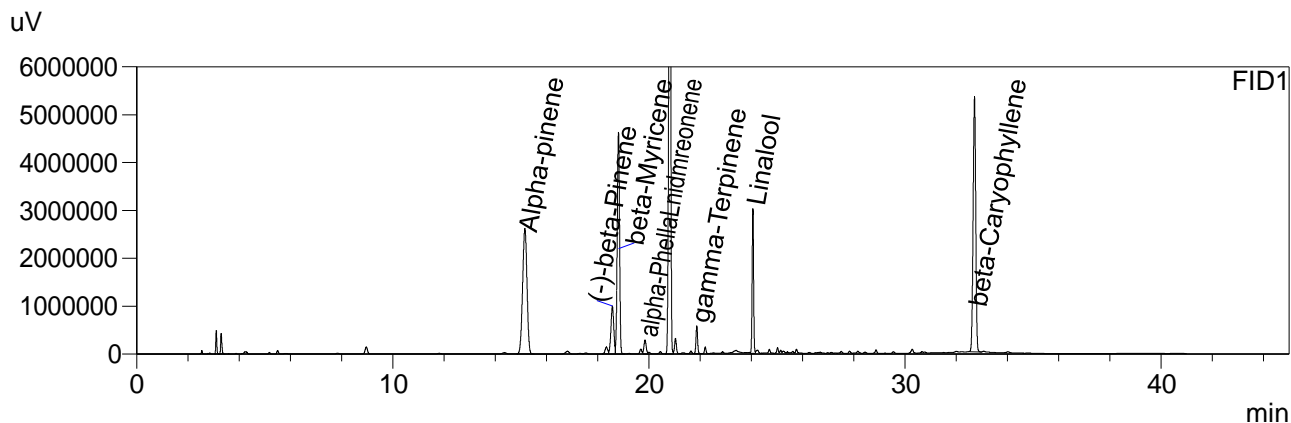
Instrumental and analytical conditions.

Sample preparation: 0.01 g (± 0.00001) of homogenous sample was dilluted with 1 mL of HPLC grade methanol. Diluted sample was mixed, vortexed and centrifuged. Then the mixture was dilluted again to a final concentration of 0.1 mg/mL. Peak identification and quantification was performed by comparing retention times and UV absorption spectra of the samples with those of the standard solutions.

Equipment: Quantitative analysis was performed using Shimadzu Cannabis Analyzer for Potency - an integrated HPLC system with built-in sample cooler, degasser, autoinjector and UV detector. NexLeaf CBX for potency, 2.7 μ m, 4.6 x 150 mm collumn coupled with NexLeaf Guard collumn. Data was analyzed using Shimadzu LabSolutions software.

CERTIFICATE OF ANALYSIS

Chromatogram



Quantitative Results

FID1

Compound Name	Concentration, %
Alpha-pinene	0.299
Camphene	--
(-)-beta-Pinene	0.057
beta-Myricene	0.288
delta-3-carene	--
alpha-Terpinene	--
Limonene	0.548
p-Cymene	--
Ocimene	--
gamma-Terpinene	0.005
Terpinolene	--
Linalool	0.109
(-)-Isopulegol	--
Geraniol	--
beta-Caryophyllene	0.362
alpha-Humulene	--
Nerolidol	--
(-)-Guaiol	--
(-)-alpha-Bisabolol	--
Nerol	--
alpha-Phellandrene	0.029

Sample information

Batch number: 6302