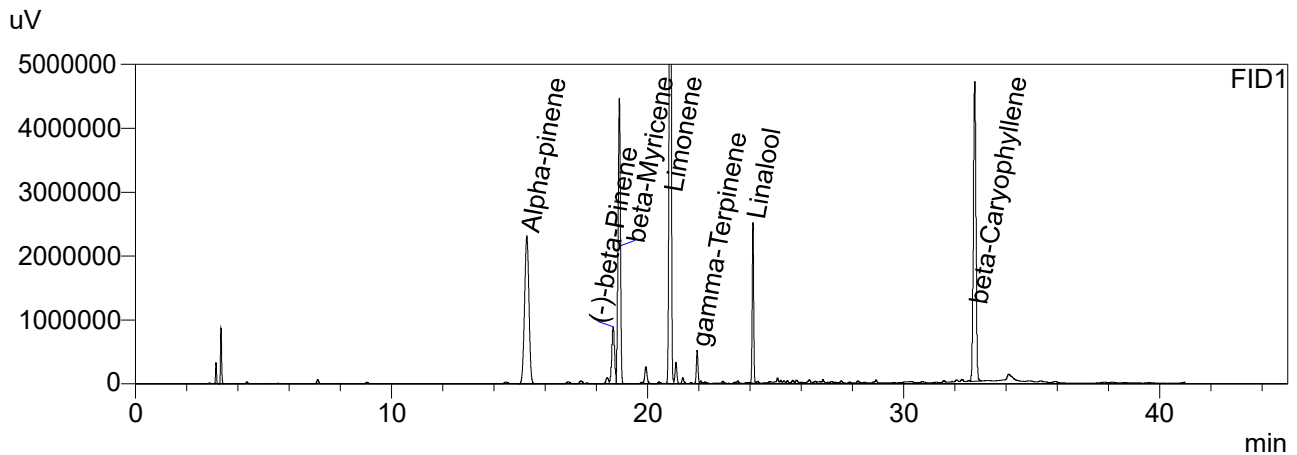


CERTIFICATE OF ANALYSIS

Chromatogram



Quantitative Results

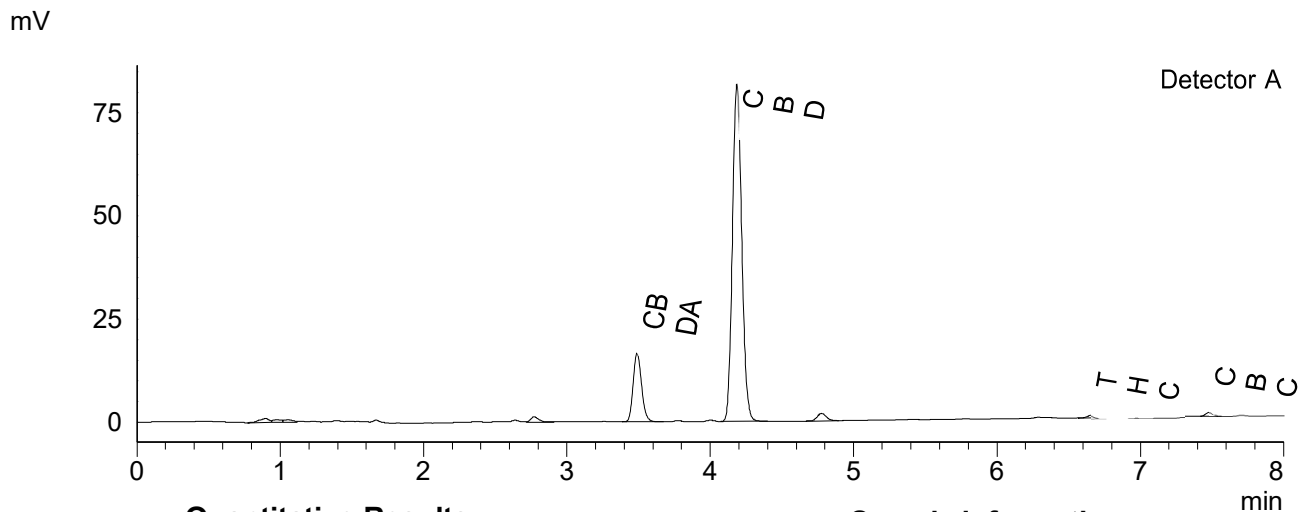
Compound Name	Concentration, %
Alpha-pinene	0.270
Camphene	--
(-)-beta-Pinene	0.050
beta-Myricene	0.282
delta-3-carene	--
alpha-Terpinene	--
Limonene	0.510
p-Cymene	--
Ocimene	--
gamma-Terpinene	0.002
Terpinolene	--
Linalool	0.091
(-)-Isopulegol	--
Geraniol	--
beta-Caryophyllene	0.327
alpha-Humulene	--
Nerolidol	--
(-)-Guaiol	--
(-)-alpha-Bisabolol	--
Nerol	--
alpha-Phellandrene	--

Sample information

Sample name: Hemp Drops 2000mg CBD RAW
Batch number: Batch 446
Date of Analysis: 2022 06 02

CERTIFICATE OF ANALYSIS

Chromatogram



Quantitative Results

Sample information

Detector A

Compound Name	Concentration, %
CBDV	--
CBDA	2.873
CBGA	--
CBG	--
CBD	18.596
THCV	--
CBN	--
THC	0.089
CBC	0.165
THCA-A	--
CBL	--
CBDVA	--
CBDB	--

Sample name: Hemp Drops 2000mg CBD RAW
 Analysis date: 2022 06 01

Summary

Total THC	0.09	%
Total THC	0.89	mg/g
Total CBD	21.12	%
Total CBD	211.15	mg/g

Instrumental and analytical conditions.

Sample preparation: 0.01 g (± 0.00001) of homogenous sample was diluted with 1 mL of HPLC grade methanol. Diluted sample was mixed, vortexed and centrifuged. Then the mixture was diluted again to a final concentration of 0.1 mg/mL. Peak identification and quantification was performed by comparing retention times and UV absorption spectra of the samples with those of the standard solutions.

Equipment: Quantitative analysis was performed using Shimadzu Cannabis Analyzer for Potency - an integrated HPLC system with built-in sample cooler, degasser, autoinjector and UV detector. NexLeaf CBX for potency, 2.7 μ m, 4.6 x 150 mm column coupled with NexLeaf Guard column. Data was analyzed using Shimadzu LabSolutions software.