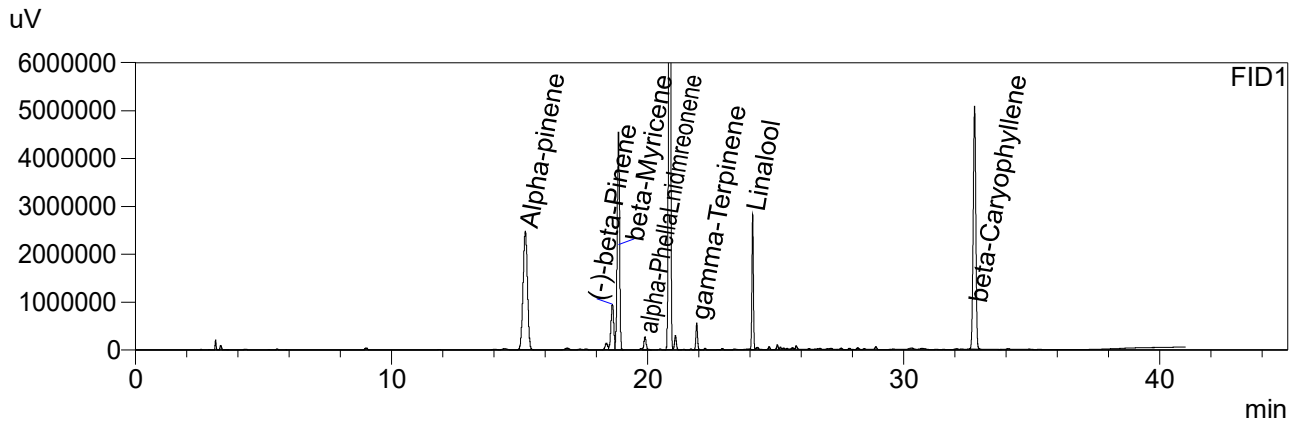


CERTIFICATE OF ANALYSIS

Chromatogram



Quantitative Results

FID1

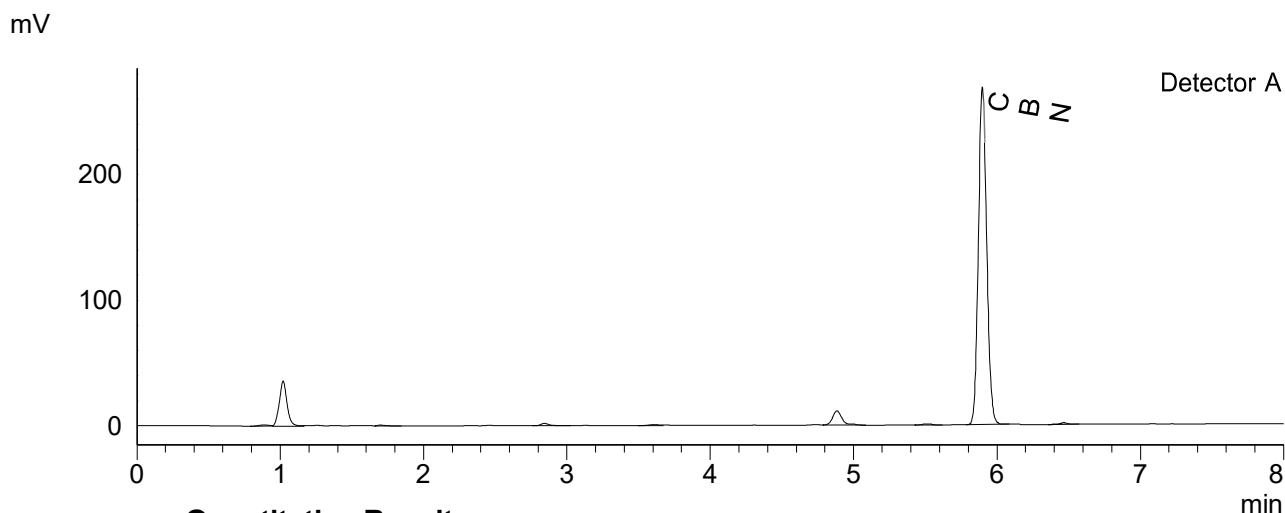
Compound Name	Concentration, %
Alpha-pinene	0.295
Camphene	--
(-)-beta-Pinene	0.056
beta-Myricene	0.290
delta-3-carene	--
alpha-Terpinene	--
Limonene	0.553
p-Cymene	--
Ocimene	--
gamma-Terpinene	0.005
Terpinolene	--
Linalool	0.106
(-)-Isopulegol	--
Geraniol	--
beta-Caryophyllene	0.359
alpha-Humulene	--
Nerolidol	--
(-)-Guaiol	--
(-)-alpha-Bisabolol	--
Nerol	--
alpha-Phellandrene	0.030

Sample information

Sample name: Hemp Drops 500mg CBN + MEL
Batch number: 80411
Analysis date: 2022 08 04

CERTIFICATE OF ANALYSIS

Chromatogram



Quantitative Results

Sample information

Detector A

Compound Name	Concentration, %
CBDV	--
CBDA	--
CBGA	--
CBG	--
CBD	--
THCV	--
CBN	5.137
THC	--
CBC	--
THCA-A	--
CBL	--
CBDVA	--
CBDB	--

Sample name: Hemp Drops 500mg CBN ISO + MEL
Analysis date: 2022 08 04

Summary

Total THC	0.00	%
Total THC	0.00	mg/g
Total CBN	5.14	%
Total CBN	51.37	mg/g

Instrumental and analytical conditions.

Sample preparation: 0.01 g (± 0.00001) of homogenous sample was diluted with 1 mL of HPLC grade methanol. Diluted sample was mixed, vortexed and centrifuged. Then the mixture was diluted again to a final concentration of 0.1 mg/mL. Peak identification and quantification was performed by comparing retention times and UV absorption spectra of the samples with those of the standard solutions.

Equipment: Quantitative analysis was performed using Shimadzu Cannabis Analyzer for Potency - an integrated HPLC system with built-in sample cooler, degasser, autoinjector and UV detector. NexLeaf CBX for potency, 2.7 μ m, 4.6 x 150 mm column coupled with NexLeaf Guard column. Data was analyzed using Shimadzu LabSolutions software.