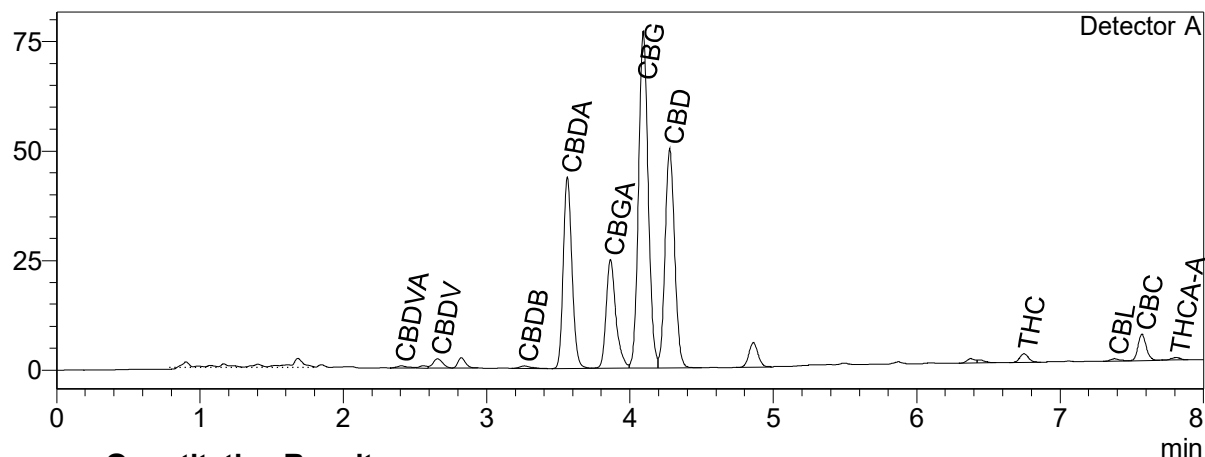


CERTIFICATE OF ANALYSIS

Chromatogram

mV



Quantitative Results

Sample information

Detector A

Compound Name	Concentration, %
CBDV	0.153
CBDA	2.610
CBGA	1.509
CBG	6.453
CBD	3.952
THCV	--
CBN	--
THC	0.121
CBC	0.385
THCA-A	0.037
CBL	0.025
CBDVA	0.032
CBDB	0.034

Sample name: 1500mg CBG RAW Capsules
Analysis date: 2022 08 05

Summary

Total THC	0.15	%
Total THC	1.54	mg/g
Total CBG	7.78	%
Total CBG	77.76	mg/g

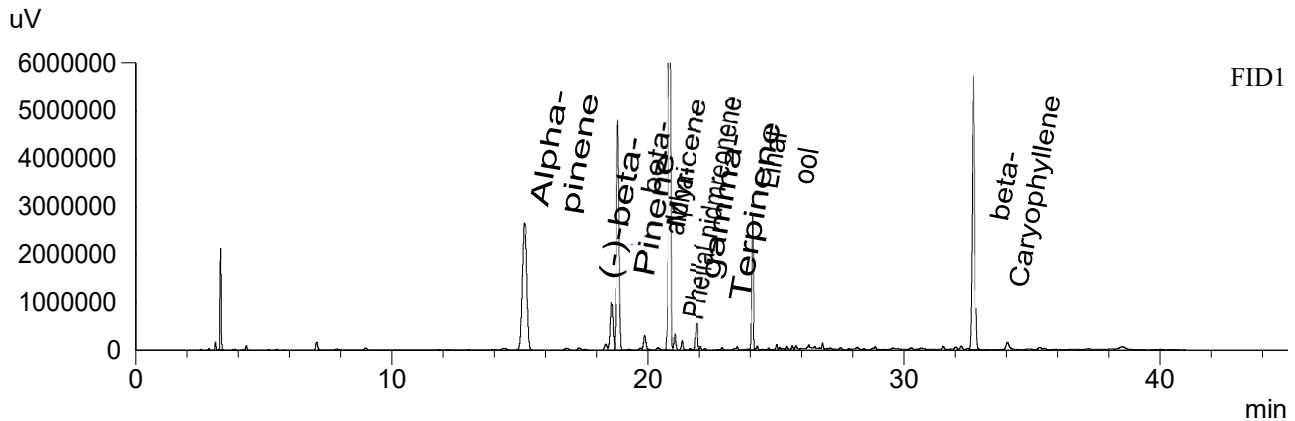
Instrumental and analytical conditions.

Sample preparation: 0.01 g (± 0.00001) of homogenous sample was diluted with 1 mL of HPLC grade methanol. Diluted sample was mixed, vortexed and centrifuged. Then the mixture was diluted again to a final concentration of 0.1 mg/mL. Peak identification and quantification was performed by comparing retention times and UV absorption spectra of the samples with those of the standard solutions.

Equipment: Quantitative analysis was performed using Shimadzu Cannabis Analyzer for Potency - an integrated HPLC system with built-in sample cooler, degasser, autoinjector and UV detector. NexLeaf CBX for potency, 2.7 μ m, 4.6 x 150 mm column coupled with NexLeaf Guard column. Data was analyzed using Shimadzu LabSolutions software.

CERTIFICATE OF ANALYSIS

Chromatogram



Quantitative Results

FID1

Compound Name	Concentration, %
Alpha-pinene	0.279
Camphene	--
(-)-beta-Pinene	0.054
beta-Myricene	0.272
delta-3-carene	--
alpha-Terpinene	--
Limonene	0.521
p-Cymene	--
Ocimene	--
gamma-Terpinene	0.007
Terpinolene	--
Linalool	0.095
(-)-Isopulegol	--
Geraniol	--
beta-Caryophyllene	0.363
alpha-Humulene	--
Nerolidol	--
(-)-Guaiol	--
(-)-alpha-Bisabolol	--
Nerol	--
alpha-Phellandrene	0.032

Sample information

Sample name: 1500mg CBG RAW Capsules
Batch number: 80413
Analysis date: 2022 08 04